

FIL + REG + LUB New deal

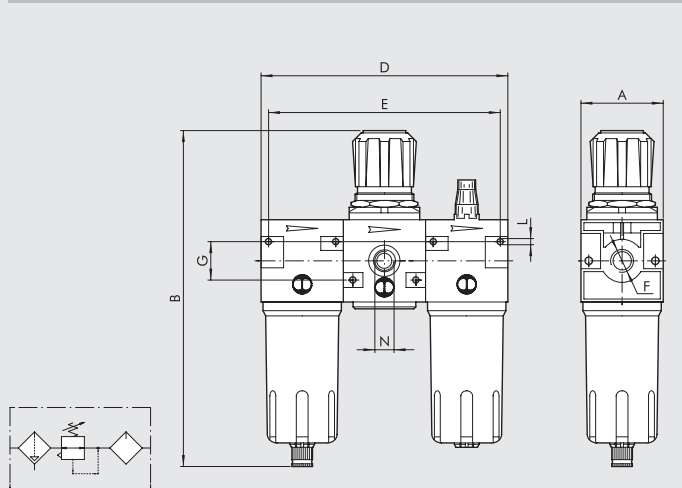


- Highly reliable heavy-duty piston-operated FRL unit.
- Stability of the set pressure as the upstream pressure varies
 - Metal bowl with external sight glass
 - Semi-automatic and automatic condensate drain
 - Lubrication proportional to flow rate
 - Micrometric lubrication regulation
 - Activation guaranteed with low flow rates
- Refer to the sections on the single modules for a further description, components and other technical data.



TECHNICAL DATA	FRL ND 1/4"	FRL ND 3/8"	FRL ND 1/2"	FRL ND 3/4"	FRL ND 1"
Threaded port	1/4"	3/8"	1/2"	3/4"	1"
Setting range	bar 0 to 8 - 0 to 12	bar 0 to 8 - 0 to 12		bar 0 to 8 - 0 to 12	
Degree of filtration	µm 4 - 20 - 50	µm 4 - 20 - 50		µm 4 - 20 - 50	
Max. inlet pressure	MPa 1.8	MPa 1.8		MPa 1.8	
	bar 18	bar 18		bar 18	
Flow rate at 6.3 bar (0.63 MPa to 91 psi) ΔP 0.5 bar (0.05 MPa to 7 psi)	NI/min 140	NI/min 1300		NI/min 1900	NI/min 2000
	scfm 5	scfm 46		scfm 68	scfm 71
Flow rate at 6.3 bar (0.63 MPa to 91 psi) ΔP 1 bar (0.1 MPa to 14 psi)	NI/min 400	NI/min 2000		NI/min 3600	NI/min 3700
	scfm 14.2	scfm 71		scfm 128	scfm 132
Max temperature at 1 MPa; 10 bar; 145 psi	°C 50	°C 50		°C 50	
	°F 122	°F 122		°F 122	
Weight	kg 1	kg 2.5		kg 4	
Wall fixing screws	M4 x 40	M4 x 55		M6 x 75	
Fluid	Compressed air				
Note on use	The maximum inlet pressure for the version with RA automatic condensate drainage must not exceed 10 bar. Do not take air from pressure gauge ports.				

DIMENSIONS



	FRL ND 1/4"	FRL ND 3/8"	FRL ND 1/2"	FRL ND 3/4"	FRL ND 1"
Threaded port F	1/4"	3/8"	1/2"	3/4"	1"
A	42	60		80	
B	190	245		332	
RA	-	249		336	
SAC	194	249		336	
D	126	180		240	
E	116	166		226	
G	20	28		44	
L	Hole for M4 screws	Hole for M4 screws		Hole for M6 screws	
N (pressure gauge port)	1/8"	1/8"		1/4"	

UNITS
FIL + REG + LUB New deal

SYNOPTIC, SIZES AND VERSIONS

FRL ELEMENT	1/4 THREADED PORT	4 DEGREE OF FILTRATION	08 SETTING RANGE	RMSA CONDENSATE DRAIN
FRL	1/4 3/8 1/2 3/4 1	4 = 4 µm 20 = 20 µm 50 = 50 µm	08 = 0 to 8 bar 012 = 0 to 12 bar	RMSA SAC RMSA SAC RA RMSA RA

RMSA: drain with manual condensate discharge and automatic discharge at zero pressure.
 RA: automatic drain with condensate discharge, independent of pressure and flow rate.
 Version conveys the draining by inserting the pipe having internal diameter 6 mm in the lower port.
 SAC: automatic drain with condensate discharge.
Operates by pressure drop – requires variable air take-offs.

ORDERING CODES

Code	Description	Code	Description	Code	Description
FRL 1/4"		FRL 3/8"		FRL 3/4"	
1224029	FRL 1/4 4 08 RMSA	1324029	FRL 3/8 4 08 RMSA	1524017	FRL 3/4 4 08 RMSA
1224409	FRL 1/4 4 08 SAC	1324033	FRL 3/8 4 08 RA	1524021	FRL 3/4 4 08 RA
1224030	FRL 1/4 20 08 RMSA	1324409	FRL 3/8 4 08 SAC	1524018	FRL 3/4 20 08 RMSA
1224410	FRL 1/4 20 08 SAC	1324030	FRL 3/8 20 08 RMSA	1524022	FRL 3/4 20 08 RA
1224032	FRL 1/4 50 08 RMSA	1324034	FRL 3/8 20 08 RA	1524020	FRL 3/4 50 08 RMSA
1224412	FRL 1/4 50 08 SAC	1324410	FRL 3/8 20 08 SAC	1524024	FRL 3/4 50 08 RA
1224053	FRL 1/4 4 012 RMSA	1324032	FRL 3/8 50 08 RMSA	1524029	FRL 3/4 4 012 RMSA
1224413	FRL 1/4 4 012 SAC	1324036	FRL 3/8 50 08 RA	1524033	FRL 3/4 4 012 RA
1224054	FRL 1/4 20 012 RMSA	1324412	FRL 3/8 50 08 SAC	1524030	FRL 3/4 20 012 RMSA
1224414	FRL 1/4 20 012 SAC	1324053	FRL 3/8 4 012 RMSA	1524034	FRL 3/4 20 012 RA
1224056	FRL 1/4 50 012 RMSA	1324057	FRL 3/8 4 012 RA	1524032	FRL 3/4 50 012 RMSA
1224416	FRL 1/4 50 012 SAC	1324413	FRL 3/8 4 012 SAC	1524036	FRL 3/4 50 012 RA
		1324054	FRL 3/8 20 012 RMSA	FRL 1"	
		1324058	FRL 3/8 20 012 RA	1624017	FRL 1 4 08 RMSA
		1324414	FRL 3/8 20 012 SAC	1624021	FRL 1 4 08 RA
		1324056	FRL 3/8 50 012 RMSA	1624018	FRL 1 20 08 RMSA
		1324060	FRL 3/8 50 012 RA	1624022	FRL 1 20 08 RA
		1324416	FRL 3/8 50 012 SAC	1624020	FRL 1 50 08 RMSA
		FRL 1/2"		1624024	FRL 1 50 08 RA
		1424029	FRL 1/2 4 08 RMSA	1624029	FRL 1 4 012 RMSA
		1424033	FRL 1/2 4 08 RA	1624033	FRL 1 4 012 RA
		1424409	FRL 1/2 4 08 SAC	1624030	FRL 1 20 012 RMSA
		1424030	FRL 1/2 20 08 RMSA	1624034	FRL 1 20 012 RA
		1424034	FRL 1/2 20 08 RA	1624032	FRL 1 50 012 RMSA
		1424410	FRL 1/2 20 08 SAC	1624036	FRL 1 50 012 RA
		1424032	FRL 1/2 50 08 RMSA		
		1424036	FRL 1/2 50 08 RA		
		1424412	FRL 1/2 50 08 SAC		
		1424053	FRL 1/2 4 012 RMSA		
		1424057	FRL 1/2 4 012 RA		
		1424413	FRL 1/2 4 012 SAC		
		1424054	FRL 1/2 20 012 RMSA		
		1424058	FRL 1/2 20 012 RA		
		1424414	FRL 1/2 20 012 SAC		
		1424056	FRL 1/2 50 012 RMSA		
		1424060	FRL 1/2 50 012 RA		
		1424416	FRL 1/2 50 012 SAC		

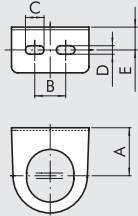
UNITS

FIL + REG + LUB New deal

Newdeal ACCESSORIES



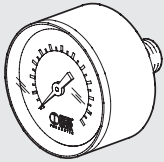
MOUNTING BRACKET FOR REG.



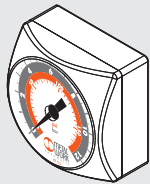
Code	Description
9200701	SF 1/4
9400701	SF 1/2

Code	A	B	C	D	E
9200701	32	20	12	5.5	14.2
9400701	42	40	12	5.5	15

PRESSURE GAUGE

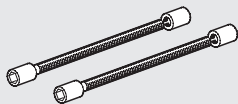


Code	Description
9700102	M 40 1/8 04
9700101	M 40 1/8 012
9800102	M 50 1/8 04
9800101	M 50 1/8 012
9900101	M 63 1/4 012

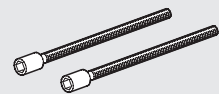


9700109	M 40x40 1/8 04
9700110	M 40x40 1/8 012

TIE RODS

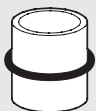


Code	Description
9200901	T 1/4 F+L tie rods
9400901	T 1/2 F+L tie rods
9600901	T 3/4 F+L tie rods



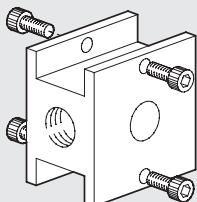
9604402	V3V+F+R 3/4-1 tie rods
---------	------------------------

ADAPTER FOR V3V



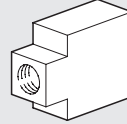
Code	Description
9201001	Adapt. X V3V+FR/D 1/4
9401001	Adapt. X V3V+D 3/8
9401002	Adapt. X V3V+D 1/2
9601001	Adapt. X V3V+F 1

REGULATOR CONNECTION BLOCK



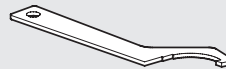
Code	Description	Weight [g]
9200501	BC 1/4 block	90
9400501	BC 1/2 block	244
9600501	BC 3/4 block	428

SPACERS FOR FRL WALL MOUNTING



Code	Description
9200601	DF 1/4 spacer
9400601	DF 1/2 spacer
9600601	DF 3/4 spacer

DISASSEMBLY TOOL FOR BOWL



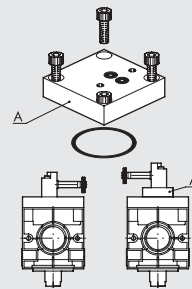
Code	Description
9601501	Disassembly key

ASSEMBLY SCREWS (2 PIECES)



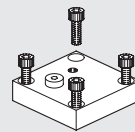
Code	Description
9250001	CVA 1/4 screw M4x40
9250002	CVA 1/4 screw M4x82 V3V+F+R
9450001	CVA 1/2 screw M5x55
9450002	CVA 3/8 1/2 screw M5x60 V3V+R
9450003	CVA 3/8 1/2 screw M5x120 V3V+F+R
9650001	CVA 3/4 screw M6X70

REVERSE PLATE CNOMO CONTROL FOR V3V 3/4"-1"



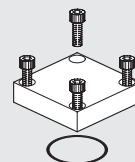
Code	Description	Weight [g]
9640201	Reverse plate kit V3V cnomo control	86

PLATE FOR REMOTE CONTROL FOR V3V 3/4"-1"



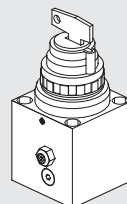
Code	Description	Weight [g]
9640001	Remote control plate kit	84

REG OR V3V END PLATE



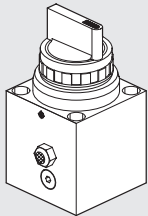
Code	Description	Weight [g]
9640101	End plate kit for regulator or V3V	82

KEY CONTROL FOR V3V 3/4"-1"



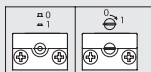
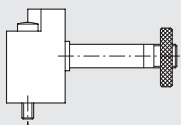
Code	Description	Weight [g]
9640301	Key control kit for V3V	364

MANUAL CONTROL FOR V3V 3/4"-1"



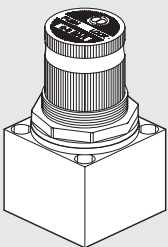
Code	Description	Weight [g]
9640401	Manual control kit for V3V	340

CNOMO CONTROL FOR V3V 3/4"-1"



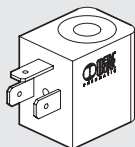
Code	Description
9453920	Elpon cnomo control kit, manual monostable
9453922	Elpon cnomo control kit, manual bistable

PILOT REGULATOR FOR ND 3/4-1"



Code	Description	Weight [g]
9640501	02 pilot regulator kit	220
9640502	04 pilot regulator kit	220
9640503	08 pilot regulator kit	220
9640504	012 pilot regulator kit	220

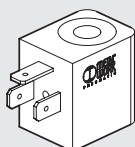
COIL 22 mm FOR V3V ELPN



Code	Description
W0215000151	Coil 22 Ø 8 BA 2W-12VDC
W0215000101	Coil 22 Ø 8 BA 2W-24VDC
W0215000111	Coil 22 Ø 8 BA 3.5VA-24VAC
W0215000121	Coil 22 Ø 8 BA 3.5VA-110VAC
W0215000131	Coil 22 Ø 8 BA 3.5VA-220VAC

Electrical connection DIN 43650 B-IND

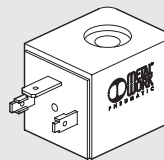
COIL 22 mm FOR V3V ELPN



Code	Description
W0215000251	Coil 22 Ø 8 BA 2W-12VDC UR
W0215000201	Coil 22 Ø 8 BA 2W-24VDC UR
W0215000211	Coil 22 Ø 8 BA 3.5VA-24VAC UR
W0215000221	Coil 22 Ø 8 BA 3.5VA-110VAC UR
W0215000231	Coil 22 Ø 8 BA 3.5VA-220VAC UR

Electrical connection DIN 43650 B-IND

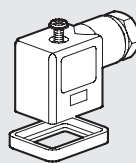
COIL 30 mm FOR V3V ELPN



Code	Description
W0210010100	Coil 30 Ø 8 2W 24VDC
W0210011100	Coil 30 Ø 8 3.5VA 24VAC 50/60HZ
W0210012100	Coil 30 Ø 8 3.5VA 110VAC 50/60HZ
W0210013100	Coil 30 Ø 8 3.5VA 220VAC 50/60HZ

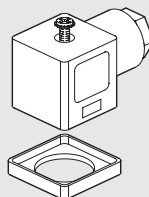
Electrical connection DIN 43650 - A

ELECTRIC CONNECTOR 22 mm FOR COILS DIN 43650 B-IND



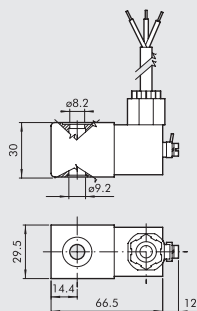
Code	Description
W0970510011	Connector standard
W0970510012	Connector 22 LED 24V
W0970510013	Connector 22 LED 110V
W0970510014	Connector 22 LED 220V
W0970510015	Connector 22 LED VDR 24V
W0970510016	Connector 22 LED VDR 110V
W0970510017	Connector 22 LED VDR 220V
W0970510070	Connector 22 ATEX II 2 GD

ELECTRIC CONNECTOR 30 mm FOR COILS DIN 43650-A



Code	Description
W0970520033	Connector standard
W0970520034	Connector 30 LED 24V
W0970520035	Connector 30 LED 110V
W0970520036	Connector 30 LED 220V
W0970520037	Connector 30 VDR 24V
W0970520038	Connector 30 VDR 110V
W0970520039	Connector 30 VDR 220V

KIT COIL EEXM



Code	Description
0227606913	Kit for coil 30 24 VDC EEXMT5 cable 3m
0227606915	Kit for coil 30 24 VDC EEXMT5 cable 5m
0227608013	Kit for coil 30 24 VAC EEXMT5 cable 3m
0227608015	Kit for coil 30 24 VAC EEXMT5 cable 5m
0227608023	Kit for coil 30 110 VAC EEXMT5 cable 3m
0227608025	Kit for coil 30 110 VAC EEXMT5 cable 5m
0227608033	Kit for coil 30 230 VAC EEXMT5 cable 3m
0227608035	Kit for coil 30 230 VAC EEXMT5 cable 5m

According to Atex 2014/34/EU rule,
 Ex II 2G Ex mb IIC T4/T5 Gb
 Ex II 2D Ex tb IIC T130/T95 °C IP66 Db
 N.B.: Supplied complete with adapter for Ø8 mm sleeve

KIT FOR COIL SIDE 22 IP65



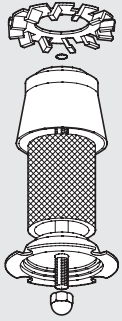
Code	Description
0222100100	Kit for coil 22 - IP65

Improved IP65 protection, even after prolonged exposure to atmospheric agents.
 Applicable to valves with a technopolymer control.

Newdeal SPARE PARTS

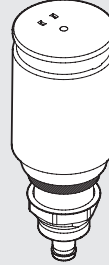


FILTER AND FILTER REGULATOR FILTERING ELEMENT



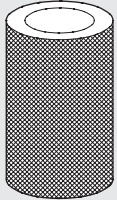
Code	Description
9450102	Spares FP 1/2 20
9450103	Spares FP 1/2 4
9450101	Spares FP 1/2 50
9250102	Spares FP 1/4 20
9250103	Spares FP 1/4 4
9250101	Spares FP 1/4 50
9650103	Spares FP 3/4 4
9650102	Spares FP 3/4 20
9650101	Spares FP 3/4 50

AUTOMATIC DRAIN (RA)



Code	Description
9000802	Spares RA automatic drain

FILTERING ELEMENT FOR DEPURATOR



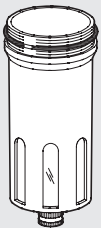
Code	Description
9450105	Spares kit FP DEP. 3/8 1/2

AUTOMATIC DRAIN (SAC)



Code	Description
9000803	Spares SAC automatic drain

METAL FILTER BOWL



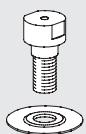
Code	Description
9450301	Spares TMVF 1/2 RMSA
945201	Spares TMVF 1/2 SAC
9250301	Spares TMVF 1/4 RMSA
925201	Spares TMVF 1/4 SAC
9650301	Spares TMVF 3/4 1 RMSA

SPRINGS FOR REGULATORS AND FILTER REGULATOR



Code	Description
9250601	Spares MO 02 1/4
9250602	Spares MO 04 1/4
9250603	Spares MO 08 1/4
9250604	Spares MO 12 1/4
9450601	Spares MO 04 1/2
9450602	Spares MO 08 1/2
9450603	Spares MO 12 1/2
9650601	Spares MO 04 3/4
9650602	Spares MO 08 3/4
9650603	Spares MO 12 3/4

VENTURI LUBRICATOR DIAPHRAGM



Code	Description
9252001	Spares MB 100 1/4
9352001	Spares MB 200 1/4 3/8 1/2
9652002	Spares MB 3/4-1

METAL LUBRICATOR BOWL



Code	Description
9251201	Spares TMVL 1/4
9451201	Spares TMVL 1/2
9651201	Spares TMVL 3/4

