

DESCRIPTION

Solenoid valve 2 way normally closed
 direct acting poppet type.
 With explosion proof coil certified:
 CESI 03 ATEX 344 ExII2G/D Eex "d" IIC T6

VALVE CONSTRUCTION

Body Stainless steel
 Seal material FPM

EXPLOSION PROOF CONSTRUCTION

Housing Red colour alloy
 Electrical connection 1/2" NPT

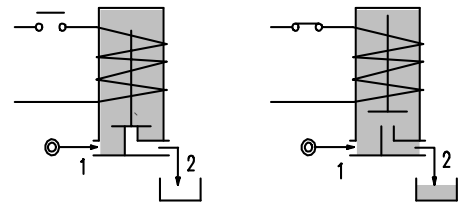
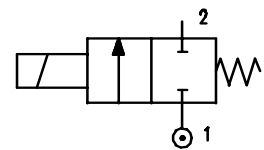


2

FEATURES

Maximum allowable pressure 100 bar
 Maximum fluid viscosity < 25cSt (mm²/s)
 Ambient temperature : -10°C +40°C
 Universal mounting position

OPTIONS : Silver shading ring



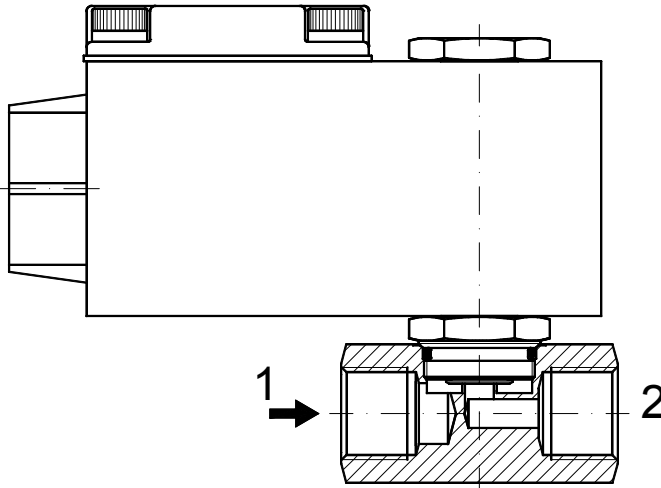
NOTE: The solenoid valve is suitable for contact with **NOT** potential explosive medias only.

CODE ②	Connection G ISO 228	Orifice mm	KV m³/h	Differential pressure bar			Nominal power		Coil Series	Seal	Temperature range °C
				Min	Max		AC Holding	DC Watt			
					AC	DC					
A110BV20///.....	1/4"	2	0.1	0	22	20	12 VA	8 W	A6	FPM=V	-10 +130
A110BV25///.....	1/4"	2.5	0.15	0	16	14					
A110BV35///.....	1/4"	3.5	0.32	0	10	8					
A110BV45///.....	1/4"	4.5	0.41	0	6.5	3.5					
A110BV52///.....	1/4"	5.2	0.47	0	4	1.8					
A110BV64///.....	1/4"	6.4	0.64	0	3.5	1					
A110CV20///.....	3/8"	2	0.1	0	22	20					
A110CV35///.....	3/8"	3.5	0.32	0	10	8					
A110CV52///.....	3/8"	5.2	0.47	0	4	1.8					
A110CV64///.....	3/8"	6.4	0.64	0	3.5	1					
A110DV20///.....	1/2"	2	0.1	0	22	20					
A110DV35///.....	1/2"	3.5	0.32	0	10	8					
A110DV52///.....	1/2"	5.2	0.47	0	4	1.8					
A110DV64///.....	1/2"	6.4	0.64	0	3.5	1					

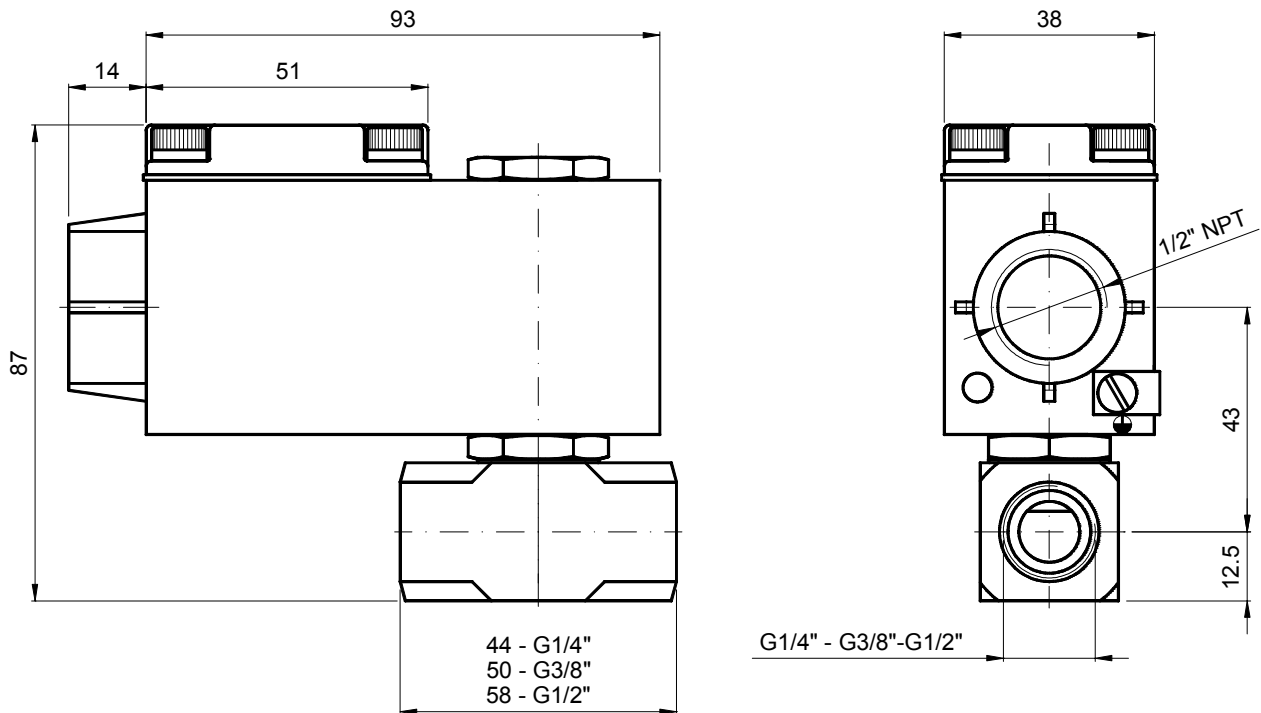
② Coil

COILS	Alternating Current ~50/60Hz Volt				Direct Current Volt			Electrical connection
	24	48	110	220 230	12	24	48	
Series A6 Code ②	A6B	A6C	A6D	A6E	A60	A61	A62	1/2" NPT

DESCRIPTION
 Voltage tolerance
 AC +15% -10%
 DC ± 10%
 Protection class IP66



OVERALL DIMENSION



Weight = 0.66 Kg