

DESCRIPTION

Encapsulated coil incorporating magnetic circuit.
 Fixing by means of a central nut.
 Electrical connection according to AMP 2.8x0.5 .

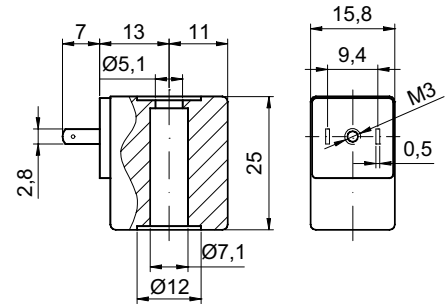


CONSTRUCTION

Encapsulation:
 Class F Fibre-glass Nylon

Magnetic circuit: Zinc-plated steel

Windings: Copper covered with
 class H insulation



OPTIONS : Electrical connection through cable
 Special coil powers
 Special coil voltages
 Self-extinguish

CODE Insulation Class F	Direct Current Voltage Volt	Power ① Direct Current Watt	Voltage tolerance	Connector	Service ED
60014	12	4	±5%	10348040	100%
60048	12	8			25%
60114	24	4			100%
60148	24	8			25%
60012	12	2			100%
60112	24	2			100%

① Considering nominal voltage and an ambient temperature of 20°C