

**DESCRIPTION**

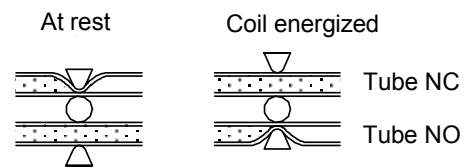
Solenoid operated pinch valve with dry armature.  
 The tube is the only part in contact with the fluid.  
 The internal diameter determines the flow.  
 Elimination of dirt traps. Maximisation of valve coefficient.  
 Fluid flow can be bi-directional.  
 Use soft tube (not supply by us) hardness 50°Sh A ±3°



**CONSTRUCTION**

Body	Anodized aluminium
Yoke	Acetal copolymer
Armature tube	Nickel plated brass
Plunger and core	Stainless steel
Springs	Stainless steel
Flange	Stainless steel

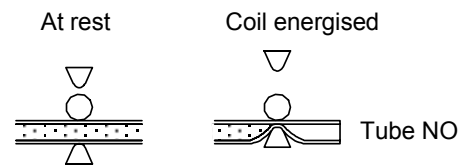
**2 tubes type**



**FEATURES**

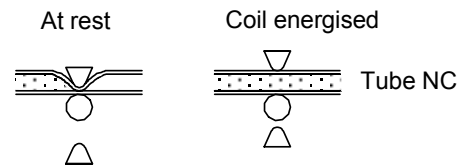
Ambient temperature : -10°C +40°C  
 Maximum fluid viscosity 65 cSt (mm<sup>2</sup>/s)  
 Preferred mounting position with vertical coil above

**1 tube type NO**



**NOTE :** the right operating of the solenoid valve is bound by a correct choice of the soft tube

**1 tube type NC**



CODE	Tube		Pinch force grams	Version	Coil		Nominal Power Watt
	Øext. +0.2 0	Min thickness wall			Width	Series	
D730/30/..... <sup>①</sup>	3	0,7	250	2tubes 1NC-1NO	16	6	8
D710/30/.....	3	0,7	250	1tube NC	16	6	4
D720/30/.....	3	0,7	250	1tube NO	16	6	4

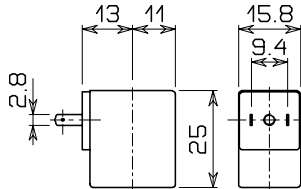
① Coil

Example: D730/30/60048  
 Version with 2 tubes 12V DC 8W ED25%

COIL	Direct Current				Electrical connection	Connector
	12V		24V			
	4W	8W	4W	8W		
Series 6 CODE Width 16 ①	60014	60048	60114	60148	AMP 2.8X0.5	PG7 10348040

**DESCRIPTION**  
 Class F insulation  
 Voltage tolerance  $\pm 5\%$   
 Protection class  
 IP65 with connector fitted  
 IP00 without connector  
 Continuous service ED100%

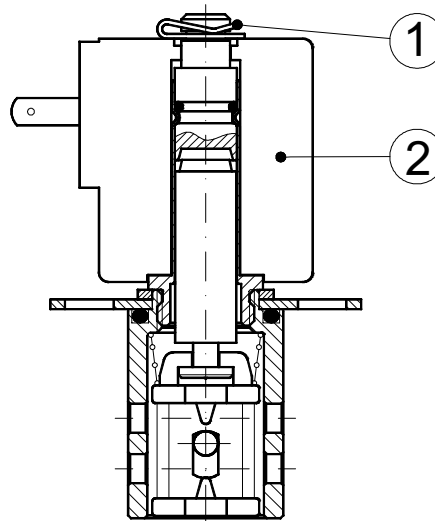
**OPTIONS**  
 Cable attached  
 Special coil powers  
 Special coil voltages



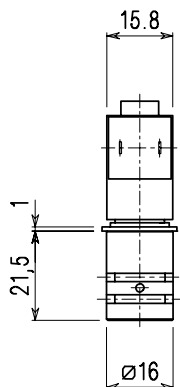
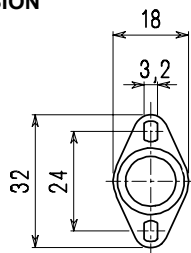
Series 6 Weight 0.02Kg

### SPARE PARTS LIST

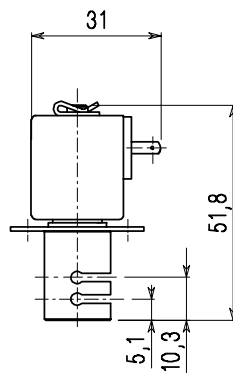
1. Coil fixing nut
2. Coil



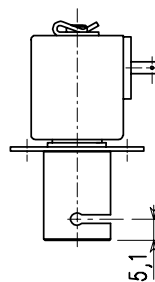
### OVERALL DIMENSION



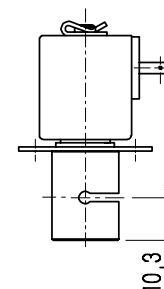
D730  
2 tubes



D720  
1 tube NO



D710  
1 tube NC



Weight = 0.04 Kg